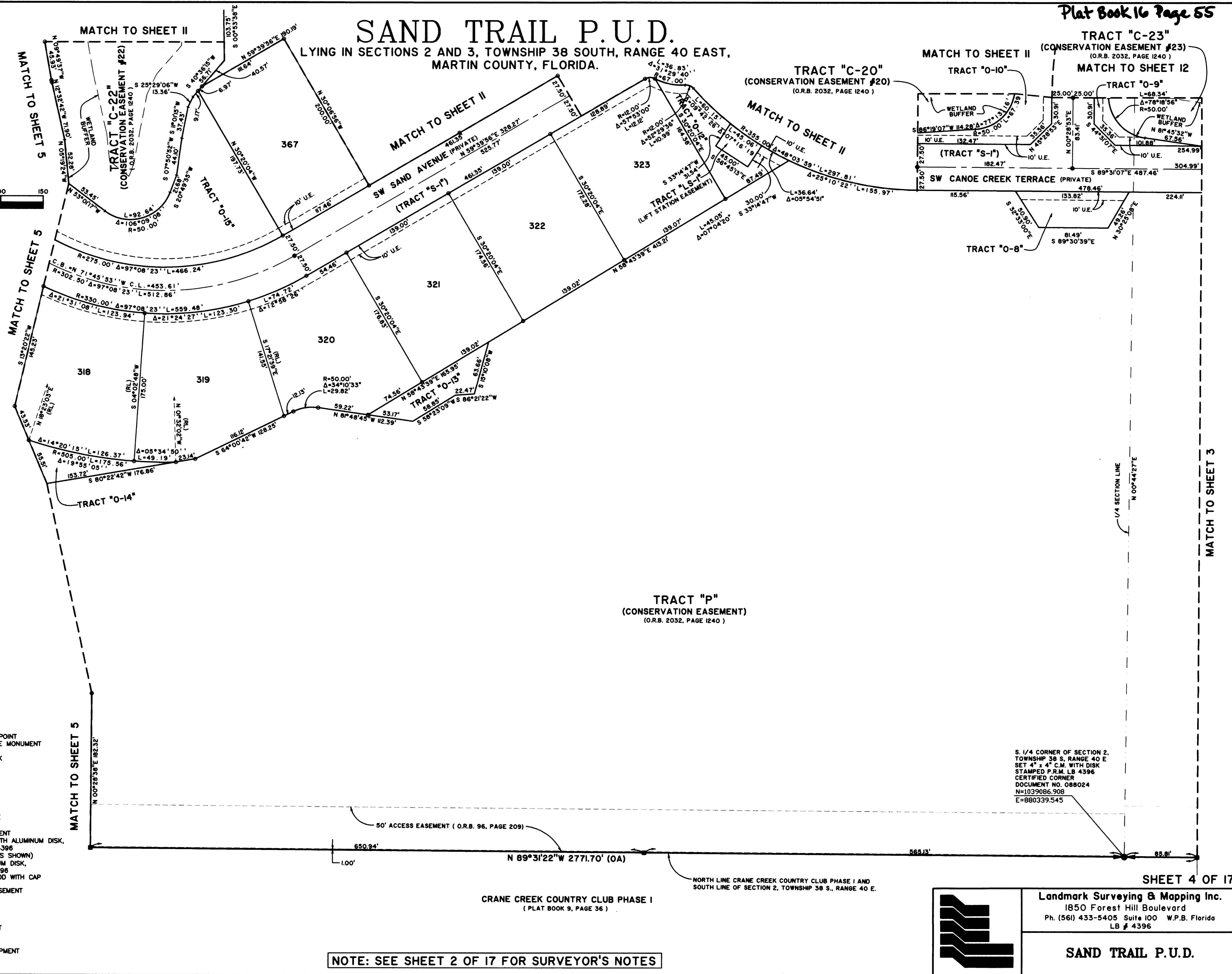
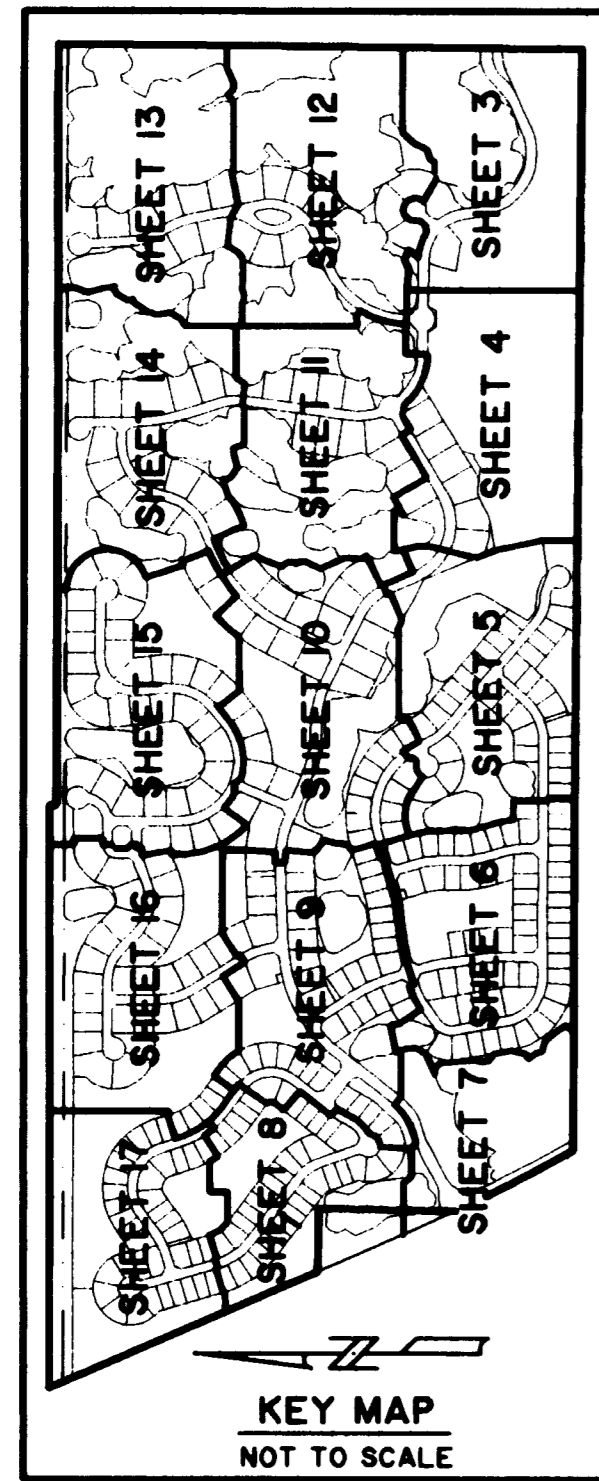
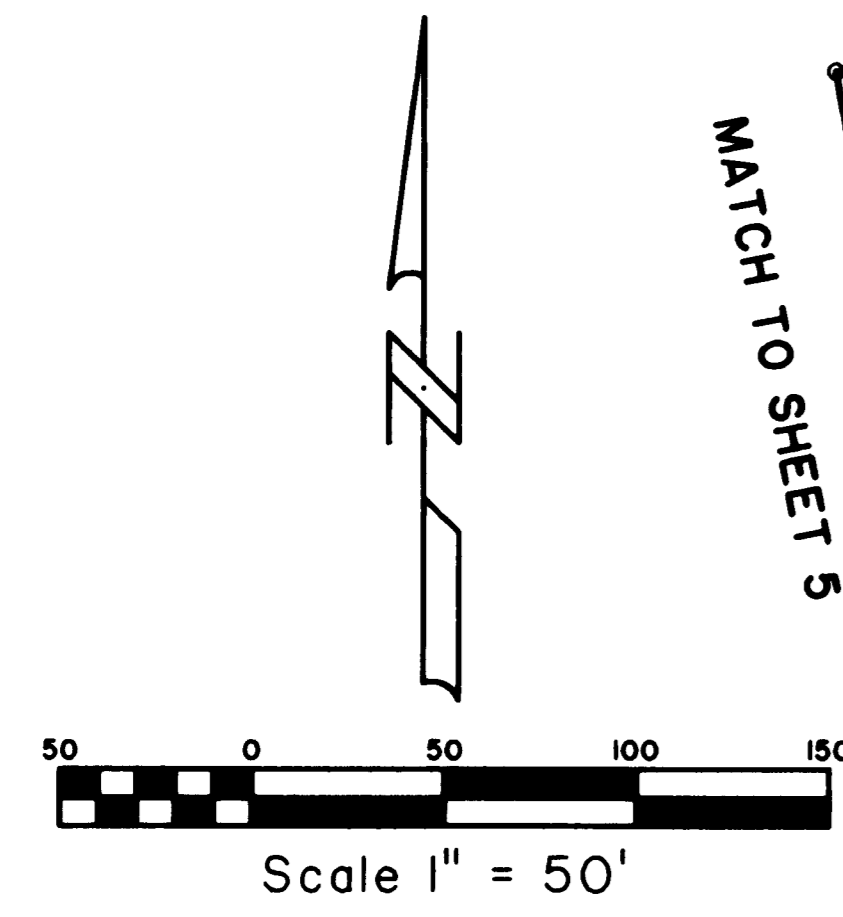


SAND TRAIL P.U.D.

LYING IN SECTIONS 2 AND 3, TOWNSHIP 38 SOUTH, RANGE 40 EAST, MARTIN COUNTY, FLORIDA.

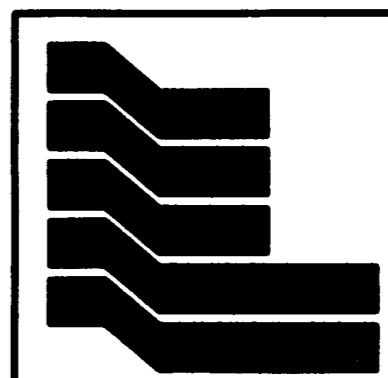


LEGEND

| | |
|--------|--|
| P.C.P. | PERMANENT CONTROL POINT |
| P.R.M. | PERMANENT REFERENCE MONUMENT |
| C.M. | CONCRETE MONUMENT |
| O.R.B. | OFFICIAL RECORD BOOK |
| P.B. | PLAT BOOK |
| PG(S). | PAGE(S) |
| C. | CENTERLINE |
| U.E. | UTILITY EASEMENT |
| D.E. | DRAINAGE EASEMENT |
| R. | RADIUS |
| L | ARC LENGTH |
| Δ | CURVE CENTRAL ANGLE |
| P.O.B. | POINT OF BEGINNING |
| P.O.C. | POINT OF COMMENCEMENT |
| ■ | SET 4"x4"x24" C.M. WITH ALUMINUM DISK, STAMPED P.R.M. LB. 4396 |
| □ | FOUND 4"x4" C.M. (AS SHOWN) |
| ● | SET NAIL AND ALUMINUM DISK, STAMPED P.C.P. LB. 4396 |
| ○ | SET 1/2"x18" IRON ROD WITH CAP, STAMPED LB. 4396 |
| L.M.E. | LAKE MAINTENANCE EASEMENT |
| C.L. | CHORD LENGTH |
| C.B. | CHORD BEARING |
| N | NORTHING |
| E | EASTING |
| L.S.E. | LIFT STATION EASEMENT |
| OA | OVERALL |
| RL | RADIAL LINE |
| P.U.D. | PLANNED UNIT DEVELOPMENT |

S. 1/4 CORNER OF SECTION 2, TOWNSHIP 38 S., RANGE 40 E. SET 4" x 4" C.M. WITH DISK STAMPED P.R.M. LB 4396 CERTIFIED CORNER DOCUMENT NO. 088024 N=1039086.908 E=880339.545

NOTE: SEE SHEET 2 OF 17 FOR SURVEYOR'S NOTES



Landmark Surveying & Mapping Inc.
1850 Forest Hill Boulevard
Ph. (561) 433-5405 Suite 100 W.P.B. Florida
LB # 4396

SAND TRAIL P.U.D.

D. V. BISHOP, N.E.P.M. 13, 0085, 2632, 2635, 4 Mon Mar 05 15:54:14 2007 PLOTTED BY LESLIE C. BISHOP